

H2O  
*Living*

# H2O *Living* Kefalas

Kefalas-Crete



2025







The plot is located in Kefalas, a small village in the Apokoronas region, near one of the main tourist centers of Crete, Chania.



5 minutes walk



Post  
9 minutes by car



5 minutes walk



School  
9 minutes by car



Hospital  
9 minutes by car



Bank  
9 minutes by car



Airopport  
20 min by car



Famous beaches  
10 min by car



Vamos village  
8 min by car



Panoramic view  
from any villa





## About Villas

H2O *living* Villas is a complex of 4 villas. Each villa embraces a large terrace with infinity pool, ideal for the Mediterranean climate

## Facts

Design 2025

Plot Area 5 234,48 sq.m.

4 villas with panoramic sea view

Car port in each villa





### Villa # 1

Plot size -624 m2  
Property size -120 m2

### Villa # 2

Plot size - 550 m2  
Property size -120 m2

### Villa # 3

Plot size - 678 m2  
Property size -127 m2

### Villa # 4

Plot size - 886 m2  
Property size -127 m2

All villas have a panoramic sea views due to their location on different elevations.







# Single-level villa



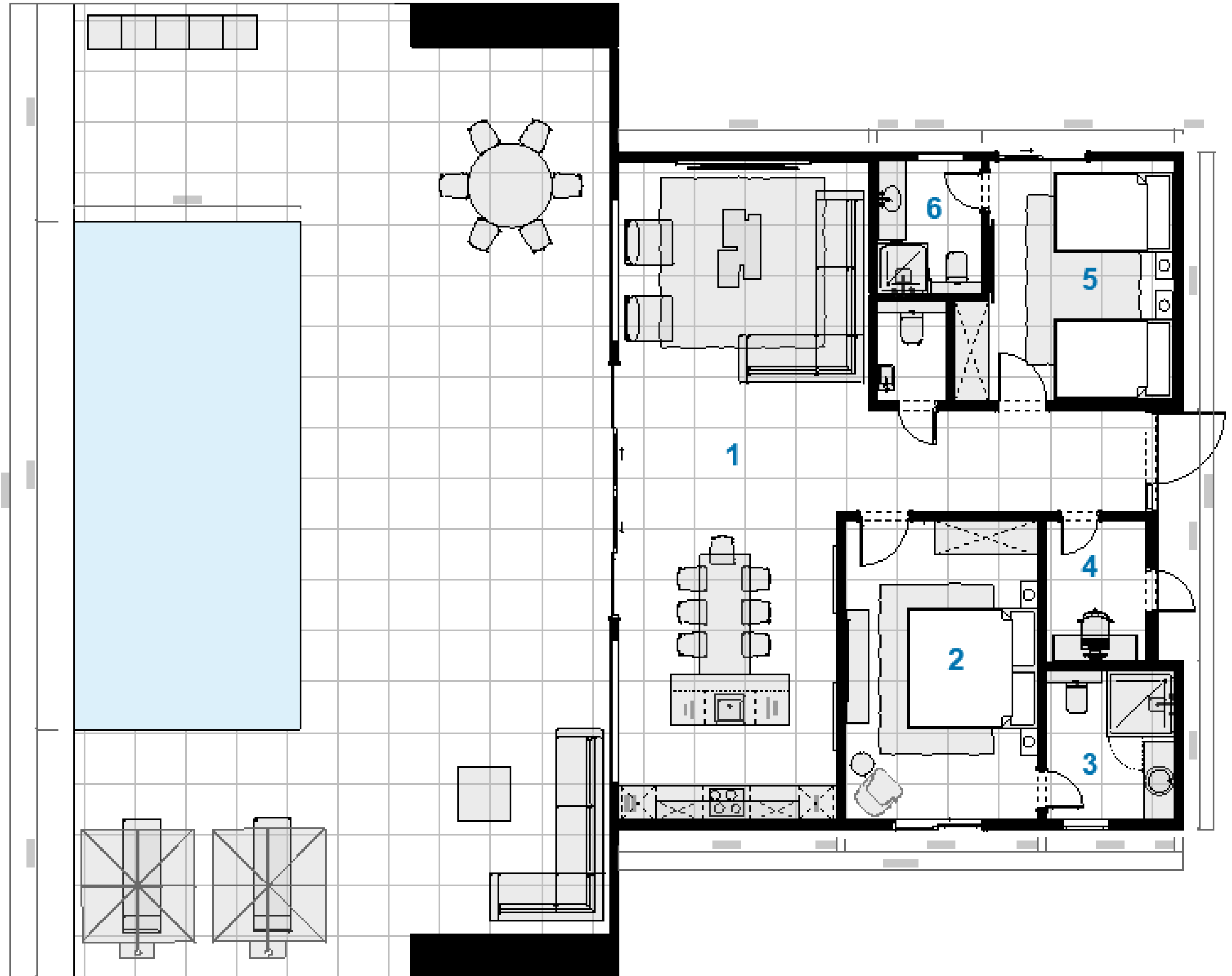


# Layout

## single-level villa

Areas table plot

1. Dining /lounge area - 62,69 m<sup>2</sup>
2. Master bedroom - 21,50 m<sup>2</sup>
3. Master bathroom - 6,84 m<sup>2</sup>
4. Office - 5,42 m<sup>2</sup>
5. Bedroom - 17,09 m<sup>2</sup>
6. Bathroom - 4,32 m<sup>2</sup>
7. Guest WC - 2,14 m<sup>2</sup>
8. Terrace - 63,15 m<sup>2</sup>
9. Infinity pool - 36 m<sup>2</sup>

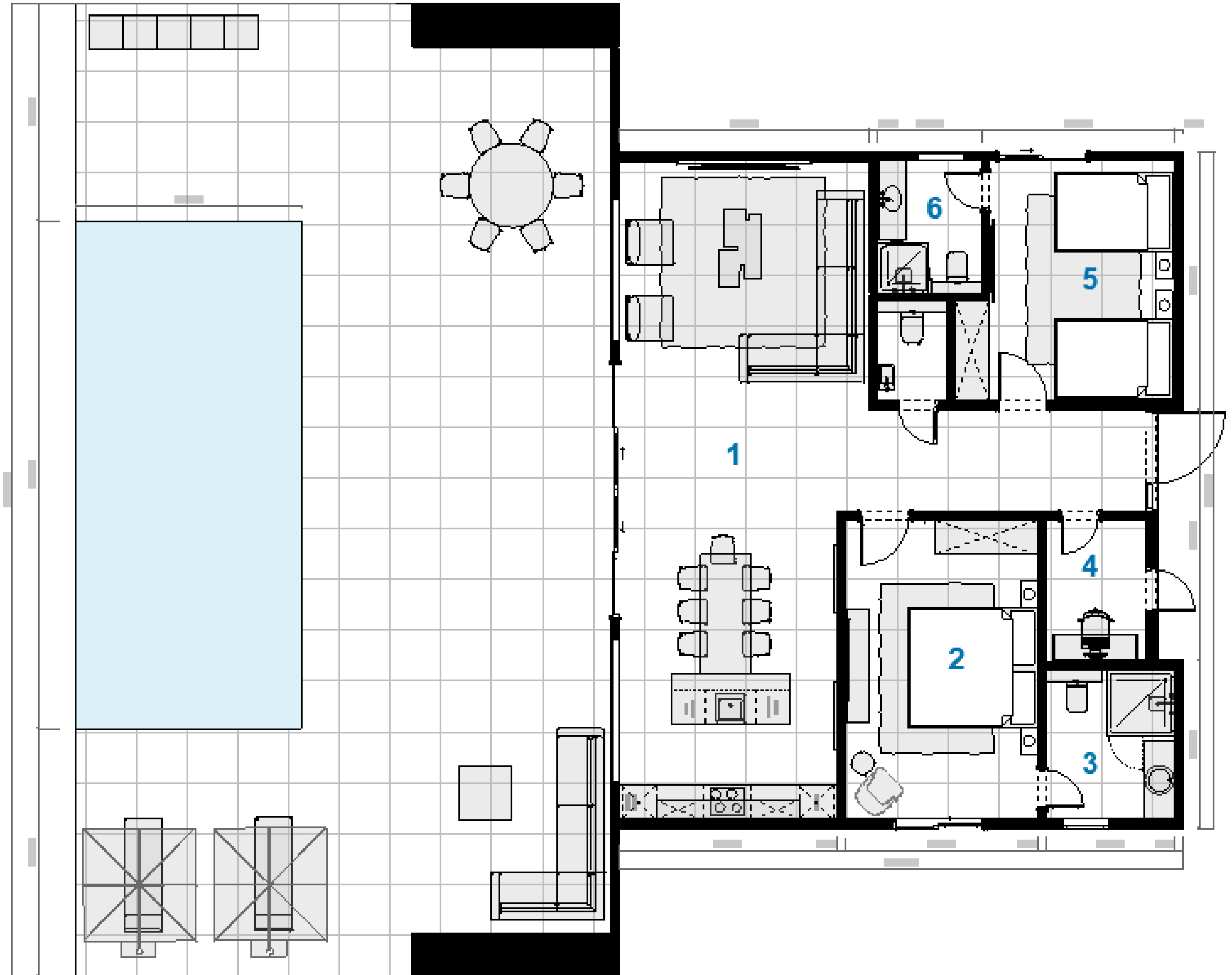




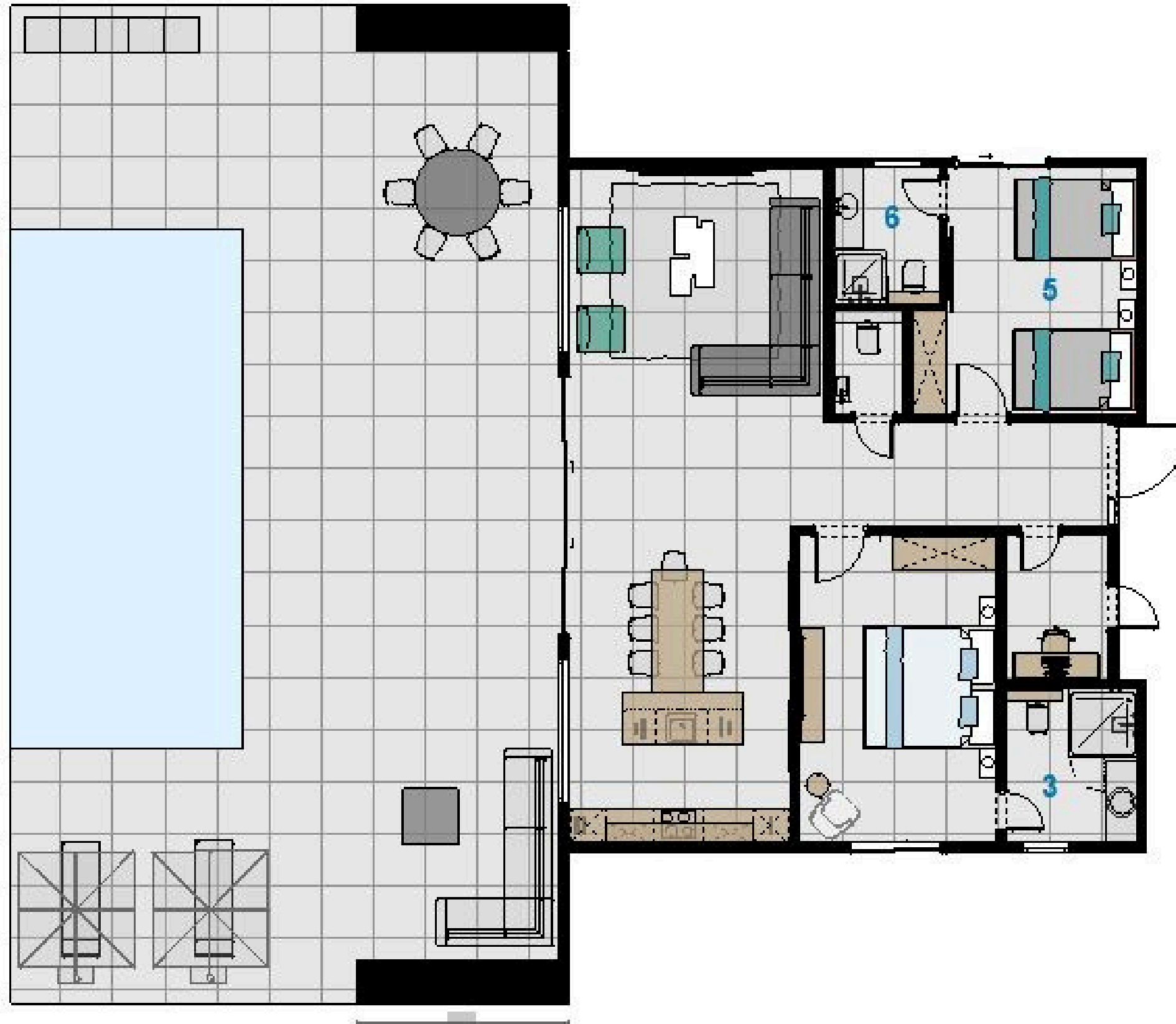
# Layout single-level villa

Areas table plot

1. Dining /lounge area - 62,69 m<sup>2</sup>
2. Master bedroom -21,50 m<sup>2</sup>
3. Master bathroom - 6,84 m<sup>2</sup>
4. Office - 5,42 m<sup>2</sup>
5. Bedroom - 17,09 m<sup>2</sup>
6. Bathroom - 4,32 m<sup>2</sup>
7. Guest WC - 2,14 m<sup>2</sup>
8. Terrace - 63,15 m<sup>2</sup>
9. Infinity pool - 36 m<sup>2</sup>







### Single-level villa

120 sqm

Bedroom -2

Bathroom-3

Office -1

Lounge area-1

Terrace with outdoor kitchen

Infinity pool  
with panoraic sea views

Car port

Single-level **H2O** living Villas are international design and fully furnished. Built-in kitchens complete with all appliances.



















	<b>Main Characteristics</b>	
1	<b>Outdoor kitchen with BBQ area</b>	✓
2	<b>The infinity pool</b>	✓
3	<b>Panoramic sea views</b>	✓
4	<b>Glass fence on terrace</b>	✓
5	<b>Roof terrace</b>	✓
	<b>Heating / Cooling</b>	
6	<b>Building energy efficiency rating A ++</b>	✓
7	<b>Autonomous Cooling/ Heating system</b>	✓
8	<b>Safety windows and sliding doors with triplex glass and mosquito nets</b>	✓

	<b>Furniture</b>	
9	<b>Kitchen cabinetries, island, dinning set</b>	✓
10	<b>Wardrobes</b>	✓
3	<b>Sofas, armchairs and beds are easy to clean and stain resistant</b>	✓
4	<b>Outdoor sofa + dinning set</b>	✓
5	<b>Outdoor kitchen with BBQ and fridge</b>	✓
	<b>Additional Characteristics</b>	
6	<b>Appliances</b>	✓
7	<b>Pivot front door 3 m high</b>	✓
8	<b>Large-format tiles anti-slip coefficient R 11</b>	✓
9	<b>Sanitary ware</b>	✓