

H2O
Living

H2O *Living* Kefalas

Kefalas-Crete



2025



The plot is located in Kefalas, a small village in the Apokoronas region, near one of the main tourist centers of Crete, Chania.



5 minutes walk



Post
9 minutes by car



5 minutes walk



School
9 minutes by car



Hospital
9 minutes by car



Bank
9 minutes by car



Airopoit
20 min by car



Famous beaches
10 min by car



Vamos village
8 min by car



Panoramic view
from any villa



About Villas

H2O *living* Villas is a complex of 4 villas. Each villa embraces a large terrace with infinity pool, ideal for the Mediterranean climate

Facts

Design 2024

Plot Area 5 234,48 sq.m.

4 villas with panoramic sea view

Car port in each villa



Villa # 1

Plot size -624 m2
Property size -120 m2

Villa # 2

Plot size - 550 m2
Property size -120 m2

Villa # 3

Plot size - 678 m2
Property size -127 m2

Villa # 4

Plot size - 886 m2
Property size -127 m2

All villas have a panoramic sea views due to their location on different elevations.



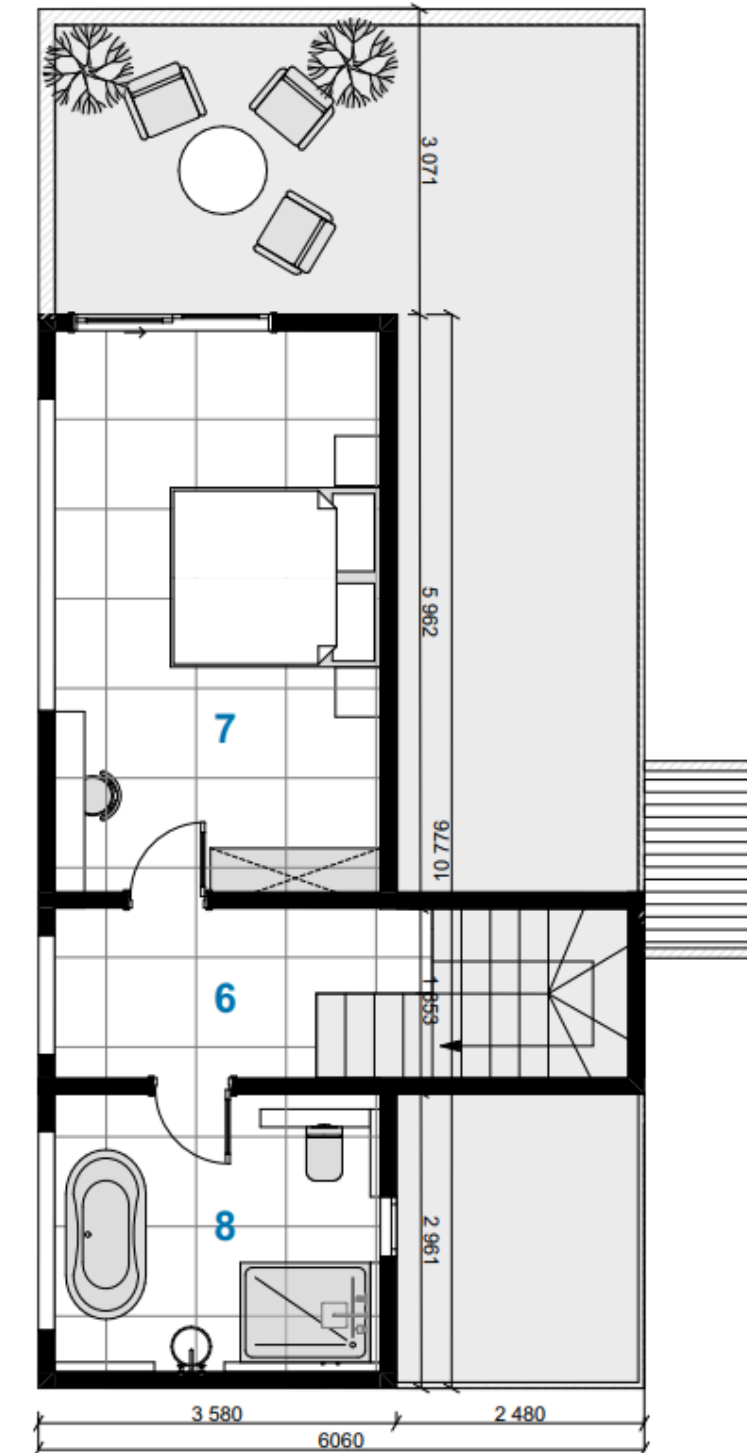
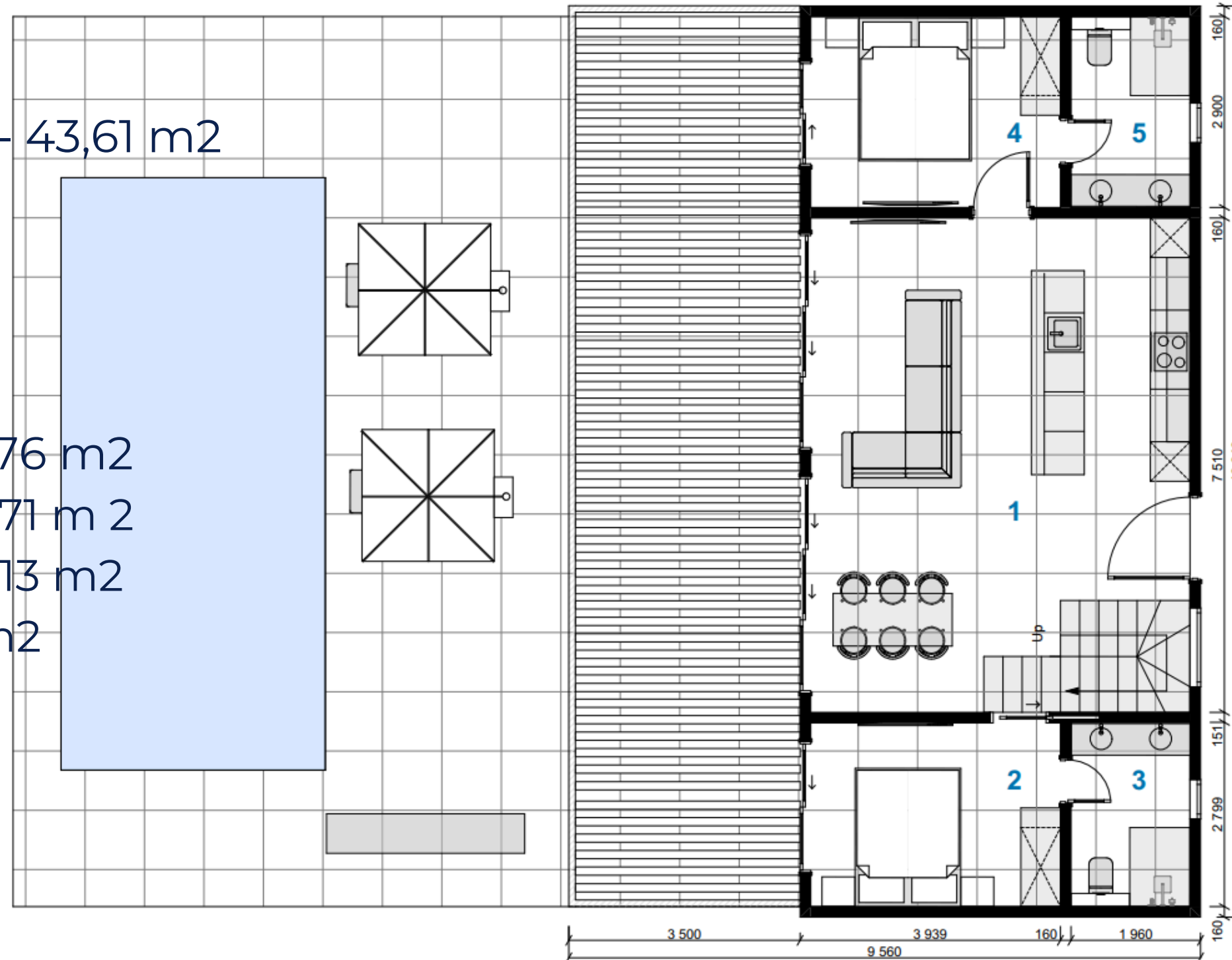
Double-level villa



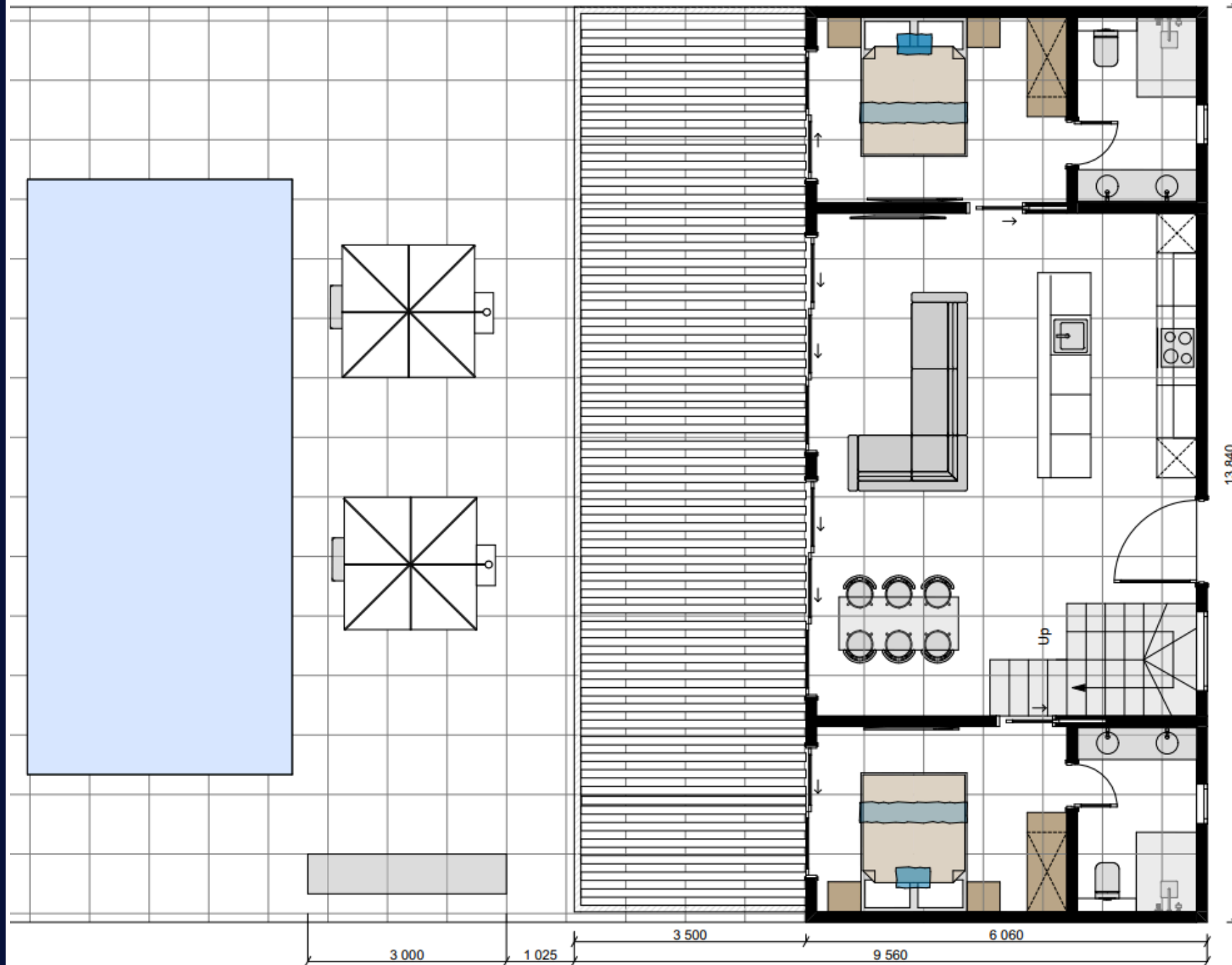
Layout double-level villa

Areas table plot

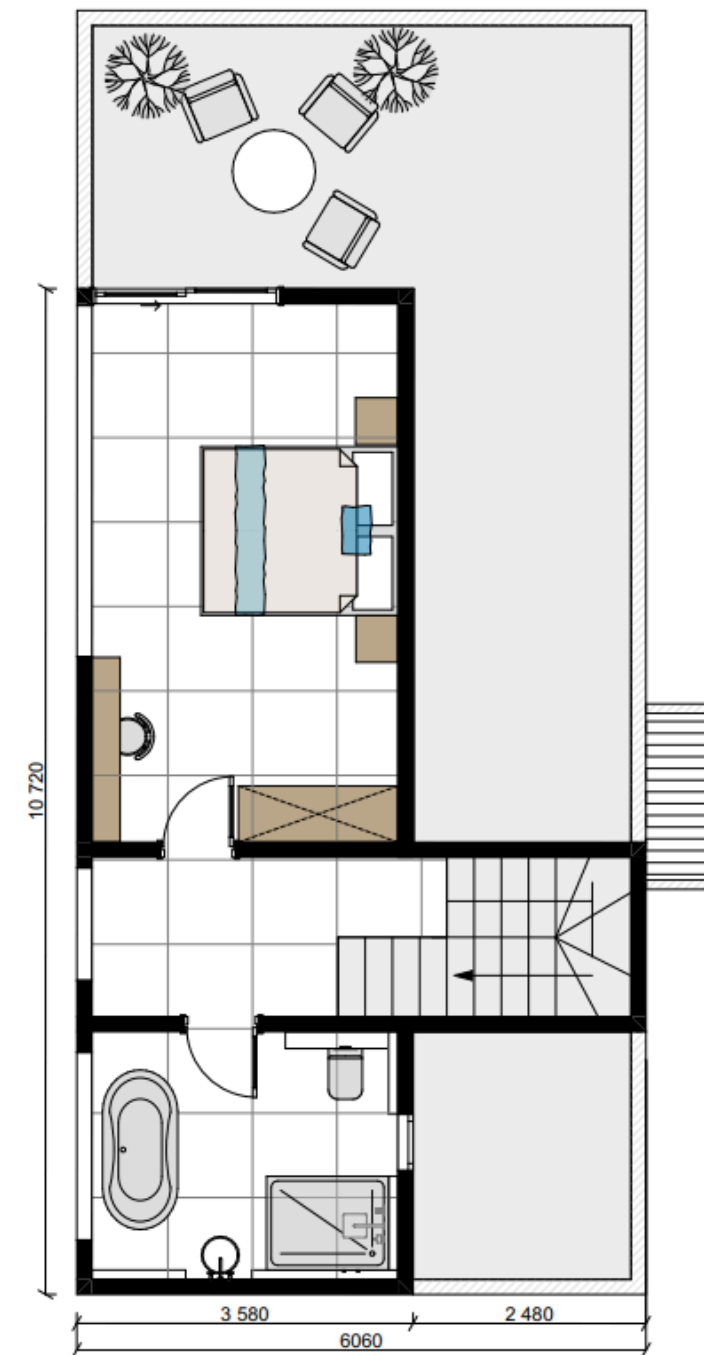
1. Dining /lounge area - 43,61 m²
2. Bedroom -11,10 m²
3. Bathroom - 4,49 m²
4. Bedroom - 10,58 m²
5. Bathroom - 5,04 m²
6. Upstairs hallway - 9,76 m²
7. Master bedroom - 18,71 m²
8. Master bathroom - 9,13 m²
8. Roof terrace - 10,60 m²
9. Infinity pool - 36 m²



Layout 1st floor



Layout 2nd floor



Double-level villa

127 sqm

Bedroom -3
Bathroom-3
Lounge area-1
Closet -3

Roof terrace - 1

Terrace with outdoor kitchen
The infinity pool
Panoramic sea views

Car port

Double-level **H2O** Villas are international *living* design and fully furnished. Built-in kitchens complete with all appliances.













	Main Characteristics	
1	Outdoor kitchen with BBQ area	√
2	The infinity pool	√
3	Panoramic sea views	√
4	Glass fence on terrace	√
5	Roof terrace	√
	Heating / Cooling	
6	Building energy efficiency rating A ++	√
7	Autonomous Cooling/ Heating system	√
8	Safety windows and sliding doors with triplex glass and mosquito nets	√

	Furniture	
9	Kitchen cabinetries, island, dinning set	√
10	Wardrobes	√
3	Sofas, armchairs and beds are easy to clean and stain resistant	√
4	Outdoor sofa + dinning set	√
5	Outdoor kitchen with BBQ and fridge	√
	Additional Characteristics	
6	Appliances	√
7	Pivot front door 3 m high	√
8	Large-format tiles anti-slip coefficient R 11	√
9	Sanitary ware	√